

2nd
Immunology Workshop
for Clinicians

PANCRETAN
HEALTH
ASSOCIATION



1-3 November 2019, Heraklion Crete, Aquila Atlantis Hotel

2

ANTI-PD1

PEMBROLIZUMAB

K / , MD, MSc



• μ μ μ μ

• .

• μ , 1 $\mu\mu$
 μ μ .

• μ μ , PDL1 (
 μ ,) .

ΘΥΜΩΜΑ					ΚΑΡΚΙΝΩΜΑ
A	AB	B1	B2	B3	C

N=200

246 μήνες παρακολούθηση

Ομάδα χαμηλού κινδύνου (I+II)

Θάνατοι ←

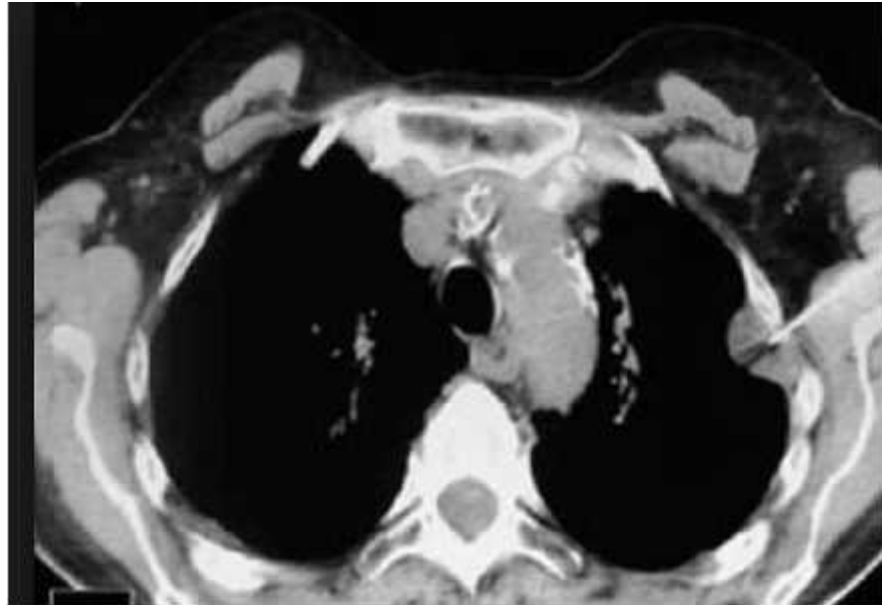
0/8	0/68	1/17	75%	70%	48%
-----	------	------	-----	-----	-----

→ 5ετής επιβίωση

B2, B3 → MG

1

- 70
- μ μ :
- 2002 – () μ
- _____ :
- 1.
- 2. O
- 3. + μ ch
-
- 1. CT BRAIN
- 2. MRI BRAIN
- 3. Ct thorax \rightarrow μ μ μ



• A μ 1ST line μ

• $(6 \mu) / \mu$ (CAP), μ μ / 7μ μ

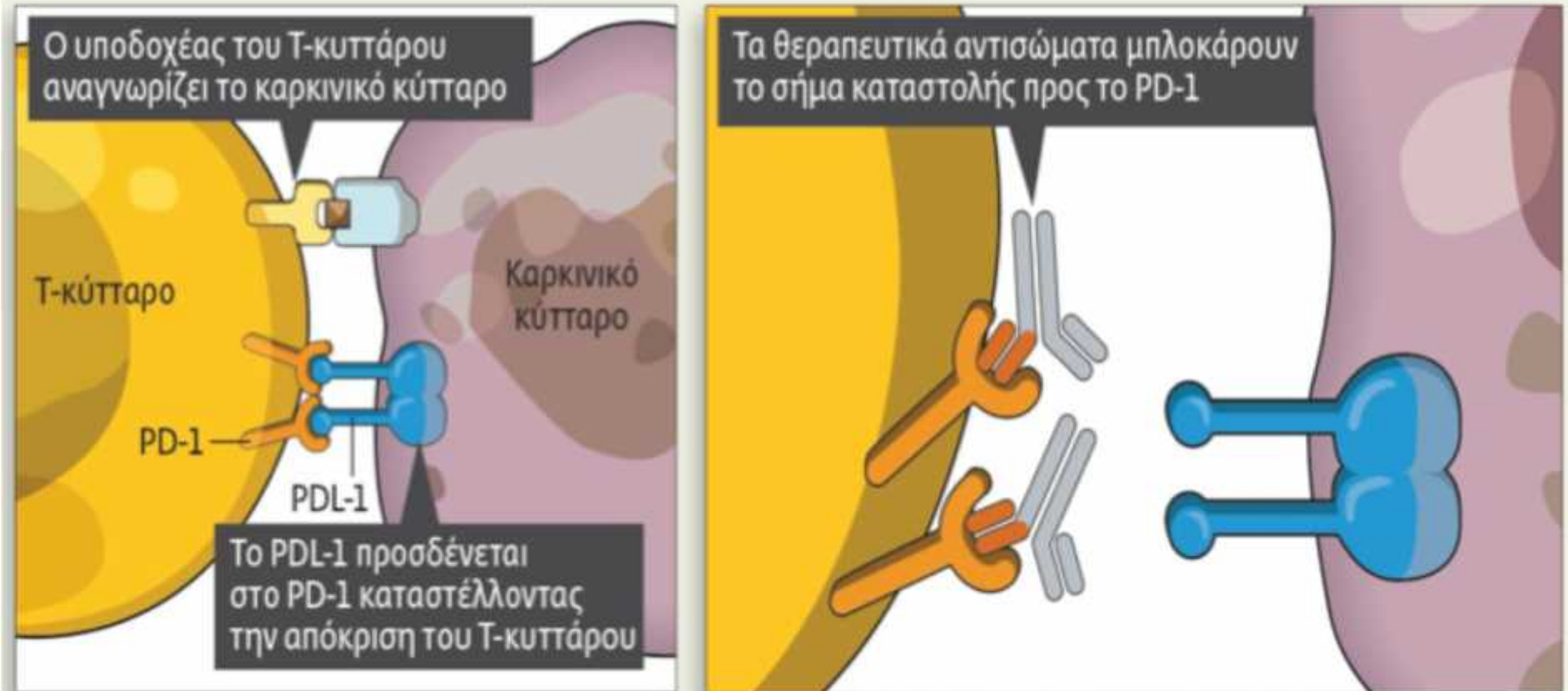
-

μ
50%

PD-L1

μ μ
.!

Τα καρκινικά κύτταρα καταστέλλουν την ανοσολογική απόκριση του οργανισμού συνδεόμενα σε πρωτεΐνες όπως η PD-1 στην επιφάνεια των Τ-κυττάρων. Οι θεραπείες αντισωμάτων μπλοκάρουν αυτή τη σύνδεση επανενεργοποιώντας την απόκριση του ανοσοποιητικού συστήματος.





- , μ -
PD1 (pembrolizumab)

- 1 μ :
μ μ 38 μ , μ ,
- μ ,
-
- μ
- μ μ



•

FBC:

Cr: 0.9, urea: 43 , SGOT:115,SGPT:50,gGT:23

Na:139, k: 4.4, **CPK : 1000** Trop:0.08

CRP :17

ECG:

(hep,CMV,EBV) : (-)

μ →

μ

μ

→

μ



- Stevens Johnson Syndrome

E v predn 1mg/kg , μ ,

3 μ

 μ . μ μ , μ , μ

SGOT↑ ,SGPT↑ ,TROP>50,CPK :1870

- Ecg : , US : <30% --- ->

/ /



- μ b-blocker, μ
mycophenolate mofetil , 5 μ
.

2

- 30 μ de novo μ μ μ 2/ 3
-
- μ $\mu\mu$ μ
- PDL1 >50 %

pembrolizumab 3 μ μ μ

- μ , μ ,

  ↑ CPK , ↑ TROP , ↑ LFTs

- ECG – μ

• μ predn 2mg/ kg

• 24 μ μ 2

• - achR + , μ

• μ ,
(400mg/kg 5days)

• μ
E rituximab weekly μ



•

μ

μ

2μ

μ



-

μ

PDL 1

•

μ μ ?

•

μ

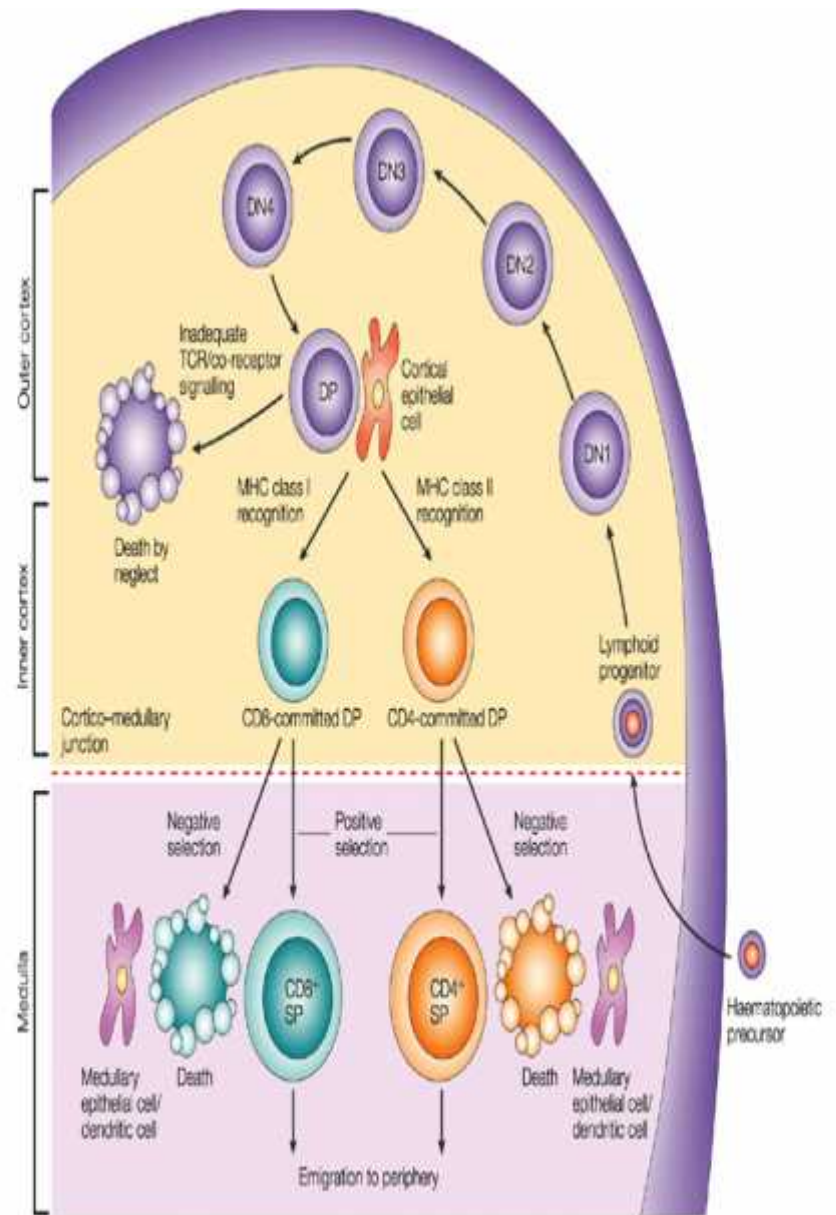
?

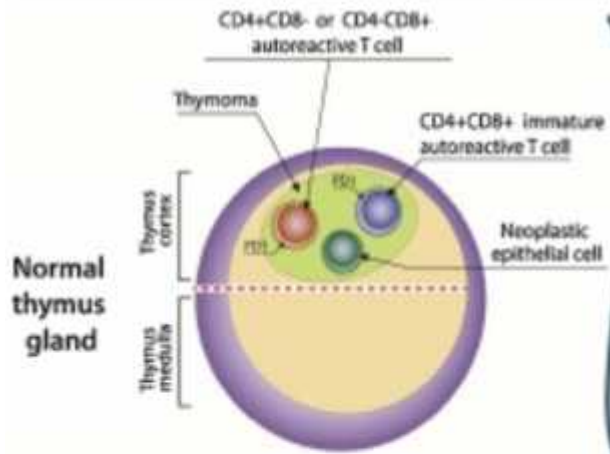
•

μ

?

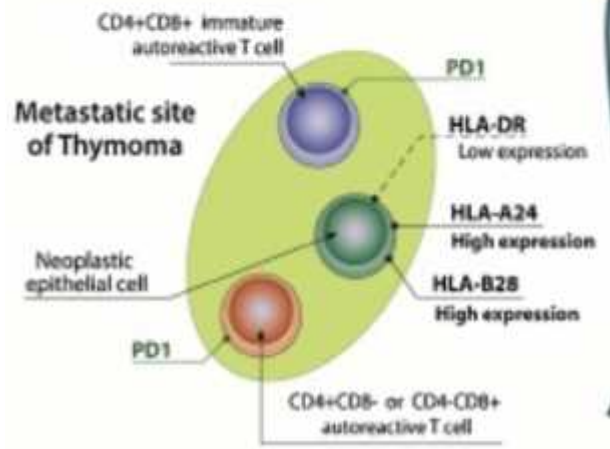
μ





The autoreactive T cells in the setting of malignant thymoma they don't pass from the thymic medulla for the development

of immune tolerance after their interaction with the dendritic cells that are stationed there and they go into the circulation.

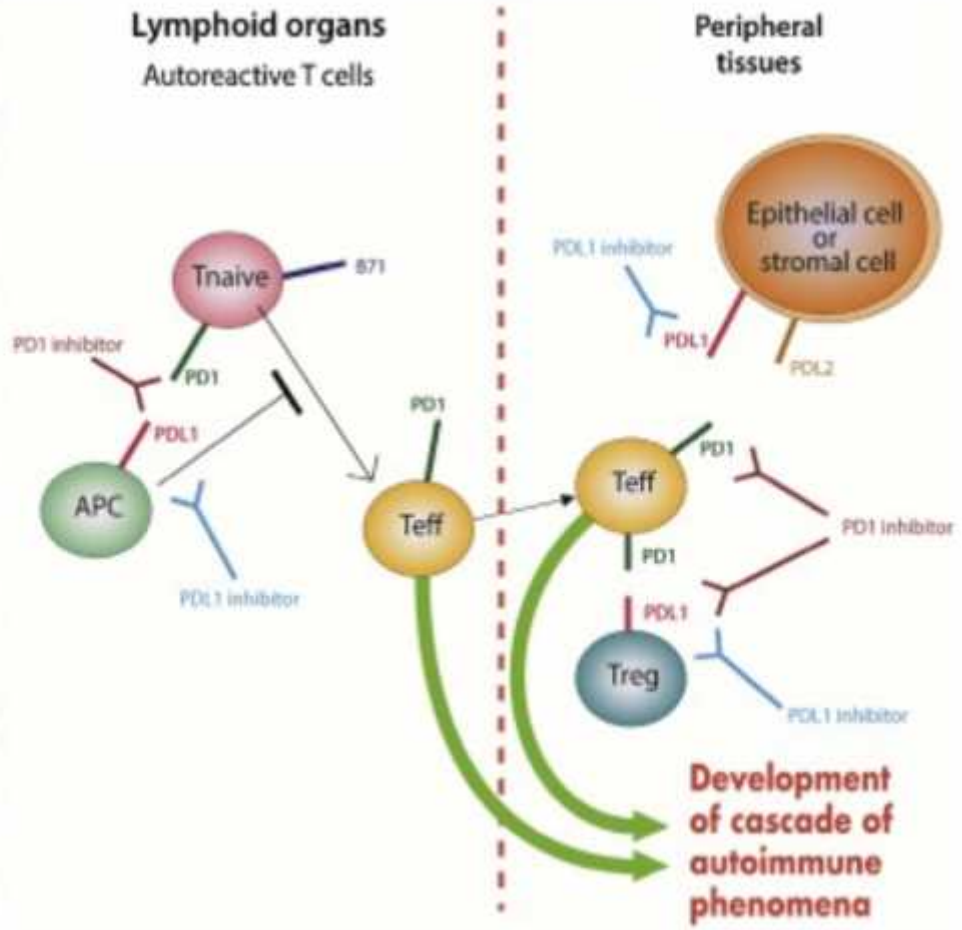


T

μ μ μ

μ μ μ

μ



HLA - DR

μ

μ μ

HLA-A24

μ

HLA-B8

μ

μ



• X

μ PD1/PDL1

, μ CD4 regs

μ μ , μ μ

•

μ μ

μ CD1+ μ

μ μ

2, 3



- μ : μ μ
- μ μ - chR
- ?



Contents lists available at [ScienceDirect](#)

Lung Cancer

journal homepage: www.elsevier.com/locate/lungcan



Fatal adverse events in two thymoma patients treated with anti-PD-1 immune check point inhibitor and literature review



Thomopoulou Konstantina^{a,1}, Rounis Konstantinos^{a,1}, Koutsopoulos Anastasios^b,
Mala Anastasia^a, Lagoudaki Eleni^b, Sougklakos Ioannis^a, Agelaki Sofia^a, Mavroudis Dimitris^{a,*}

^a Department of Medical Oncology, University General Hospital of Heraklion, Heraklion, Greece

^b Laboratory of Pathology, University General Hospital of Heraklion, Heraklion, Greece

!

